

Appraisal
Replacement Value

Prepared For:

Pamela Jeanne Weston

aka Moma De Louvre, aka Ava Avione

Talismanic Series Box #20



Appraisal By:

Richard C. Frey, ISA CAPP Life Member

Certified Appraiser of Personal Property
of the International Society of Appraisers
1275 East Avenue, Chico, California 95926
Phone (530) 343-4528
richardcfreyfineartgallery.com/appraisals

Table of Contents

Introduction	Pages	1-2
Talismanic Story	Page	3
Talismanic Series Box #20 Description	Page	4
Talismanic Series Box #20 Valuation	Page	5
List of Box #20 Serial Numbers and Titles	Page	6
Photos of each Talismanic Painting	Pages	7-31
Photos of Box #20	Page	32
Richard C. Frey Professional Profile	Page	33



RICHARD C. FREY APPRAISERS

1275 EAST AVENUE, CHICO, CA 95926 PH (530) 343-4528

richardcfreyfineartgallery.com/appraisals

CERTIFIED APPRAISER OF PERSONAL PROPERTY, ART AND ANTIQUES
OF THE INTERNATIONAL SOCIETY OF APPRAISERS
AMERICAN ARBITRATION ASSOCIATION PANELIST

Pamala Jeanne Weston
10230 Hwy 175
Kelseyville, CA 95451

January 22, 2021

As requested by my client, **Ava Avione aka Moma De Louvre oka Pamela Jeanne Weston**, on January 14, 2021, I conducted an appraisal of Box #20 of the Talismanic Series of 25 paintings. The purpose of the appraisal was to determine the value of the items for Replacement Value. The appraisal was performed by me, Richard C. Frey, with assistance from Nicole Hart, and Morgan Spont my Assistant Appraisers. We conducted the appraisal of twenty-five fine art paintings. Nicole Hart cataloged the relevant items and took quality photographs of each painting. I completed the appraisal using quality images, along with the catalogued descriptions of the items and photos provided by Pamela Jeanne Weston. I have personally inspected these paintings.

This appraisal made use of the cost approach and sales comparison approach. In the cost approach, the marketplace is researched to estimate replacement cost, i.e. the amount of money it would cost to replace the subject property or to acquire a suitable replacement property. Replacement cost used is the cost necessary to replace the items appraised with similar items of property of like kind, age, quality, and utility, having similar wear and tear, decay or defects and obsolescence as the items being appraised. Replacement cost used (comparable) assumes that exact duplicates cannot be found for the property appraised. Replacement cost used (comparable) is useful when estimating values for antiques, collectibles, or works of art.

These Talismanic Paintings in Box #20 have been appraised and authenticated on January 22, 2021. By Richard C. Frey I.S.A., C.A.P.P. Life Member, Appraiser of personal property for over 40 years, specializing in Fine Arts: paintings, prints, drawings, sculpture, antiques, art glass, lamps, pottery, copper, silver, furniture, Japanese, rare books, stamps, coins, etc.

Markets explored were retail markets such as auction houses, galleries, including those online. The markets used in the development of this report were slightly depressed. In general, values are estimated by consultation with and/or use of several types of resources including specialist dealers, auction sales results, classified advertisements, reproduction quotes, retailer catalogs, recognized price guides, invoices, actual sales by dealers, or other personal observations. Unless otherwise stated herein, the values expressed are based on the general expertise and qualifications of the appraiser as to the appropriate market and valuation methods for the items involved. Where particular detailed valuation information is relied upon, it will be specifically stated in writing. Additionally, we have relied upon the readily apparent identity of the items appraised. In my opinion, no further guarantee of authenticity, genuineness, attribution, or authorship is necessary.

Should, in conjunction with this appraisal, additional services of the appraiser be requested by the client, his agent or lawyer, or the courts (such as for added time researching for other value purposes, pretrial conferences, court appearances, court preparations, etc.), compensation for same shall be at the customary hourly rate charged by the appraiser at that time and shall be paid by the client immediately upon receipt of a statement for said work.

Talismanic Series

We regard all information concerning this appraisal as confidential. We also retain a copy of this document along with my original notes and will not allow others to have access to these records without your written permission unless so ordered by a court of law.

We have inspected, photographed, and described this Talismanic series Box #20.

There are 25 pieces in this box as pictured in the following pages.

I have provided my qualifications at the end of this Appraisal.

Sincerely,

A handwritten signature in cursive script that reads "Richard C Frey". The signature is written in black ink and is positioned above a horizontal line.

Richard C. Frey, ISA CAPP Life Member
International Society of Appraisers
Certified Appraiser of Personal Property

Talismanic Series

By Pamela Jeanne Weston aka Ava Avione aka Moma De Louvre

Each year Pamela Jeanne Weston produces a series of paintings unique to any other year. The output is prodigious and explorative. The medium and focus change as well. Her intent and purpose are always consistent with quality, integrity, and vision. Weston has been painting for many years and Richard C. Frey has documented and appraised her works 3 separate times over the years 2001, 2010 and now in 2021. This unique collection of the artwork of Pamela Jeanne Weston consists of a series of paintings that the artist produced in 1989 while traveling around the world with a distinct purpose in mind.

Weston decided to tour many countries to discover and communicate with as many third world peoples as possible. She wanted the artwork to document her and their journey on this planet. She wanted at least 80 tribes work with her on the pieces recording their communications, history and wisdom. The paintings became the strong and sensitive talismanic records. The paintings are primitive and rich with the lore and visions of these incredible peoples. They will never be duplicated in experience, as many of these people are even now no longer in existence as they were in their original cultures.

The artist captured their unique visions in layers on intention for each piece. The process began with making the paper, then the paints, pigments and packaging. The journey began in Hong Kong travelling by many means of transportation including bullocks and carts in the Himalayas, jeeps over sand in the Rajasthan Desert, Riverboats on the Nile and the Amazon, trains, horses, and other pack animals. The process and the paintings traveled thousands of miles. When completed the boxes were handmade in the Philippines. The paintings were shipped by container to the Los Angeles Port in 1991.

Each painting is painted on handmade paper and canvas combined created by Pamela Jeanne Weston. The pigments are derived from materials found in her travels through four continents. They were hand-picked from native plants and then ground and mixed with intention and exploration. The pigments were then mixed with glues and additives to form Weston's own painting formulas. These were tested in the desert sun in temperatures up to 130 degrees Fahrenheit.



Talismanic Series

Artist: Pamela Jeanne Weston aka Moma De Louvre and Ava Avione
Medium: Painting- Archival Pure Pigment extenders and binders on board
Size: 11" x 14"
Painted: 1989
Series: Talisman
Created: World
Serial No: PW9200725 - PW9200749
Provenance: Museum Power and Light Moma De Louvre Ink Factory Los Angeles
Artists Collections Grace Millennium Hinds Collection David Kaplan
Collection Museum Bank Foundation Fund
Literature: Including but not limited to: major newspapers, magazines, videos,
journals, blogs, internet archives, interviews, films, diaries, testimonies,
catalogues, concert and event promotions and posters.

More:

The Talisman paintings are in groups of 25 called "Investors Boxes".
They come in a handmade wooden box that was made in the Philippines.
All Paintings in the Talismanic Series were painted in 1989, signed and dated in San Diego in
1991-1992. The works are acrylic, oil, pure pigment, extenders and binders with gold and silver
on board. All Talisman Paintings are signed as and by Pamela Jeanne Weston
aka Moma De Louvre and Ava Avione.

The collection, known as the Talisman Series, is intended to be presented as complete, the
whole collection telling an intended Story.

Talisman paintings from "Box 20" are pictured in the following pages. Serial numbers are in
order and range from #PW9200725 through #PW9200749. Each Painting has a title.

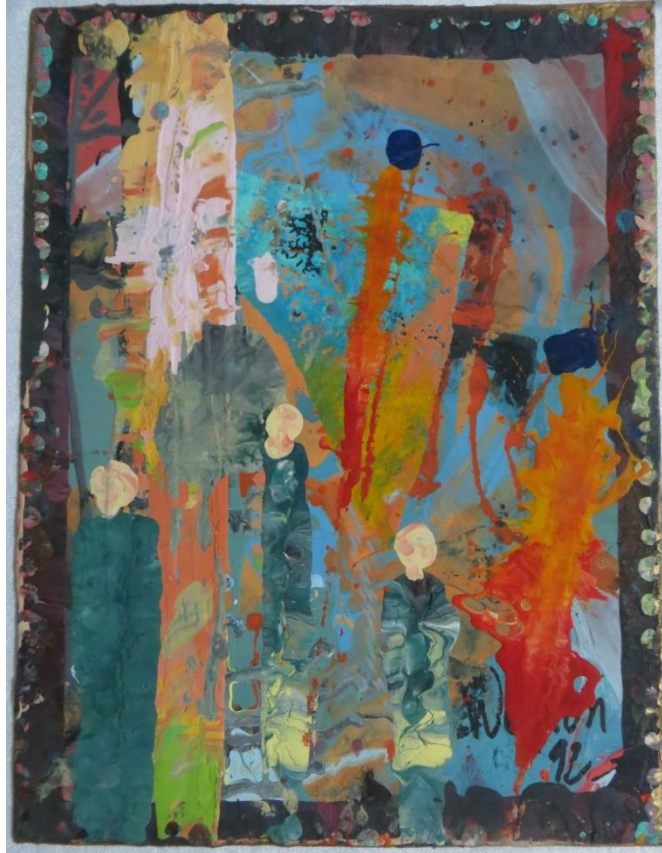
Replacement Value for each Talisman Painting: **\$25,000 USD**

Total Replacement Value for Box #20 of 25 Talisman Paintings: **\$625,000 USD/Lot**



Richard C. Frey, ISA CAPP Life Member
International Society of Appraisers
Certified Appraiser of Personal Property

Talismanic Series



Artist: Pamela Jeanne Weston aka Moma De Louvre and Ava Avione
Medium: Painting- Archival Pure Pigment extenders and binders on board
Size: 11" x 14"
Painted: 1989
Series: Talisman Series
Created: Around the World, signed and dated in San Diego in 1991-1992

Replacement Value for each Talismanic Painting: \$25,000 USD
Total Replacement Value for Box #20 of 25 Talismanic Paintings: \$625,000 USD/Box

Richard C Frey

Richard C. Frey, ISA CAPP Life Member
International Society of Appraisers
Certified Appraiser of Personal Property

Talismanic Series

Talisman Series, Box 20, Serial Numbers # PW9200725 - PW9200749:

PW9200725	Belt Of Orion
PW9200726	Breaking Through Reality
PW9200727	Shambala
PW9200728	United
PW9200729	Coral Sea
PW9200730	Passing So Fast
PW9200731	Exquisite Sea Shell
PW9200732	Nemesis
PW9200733	Magic Carpet Rides
PW9200734	Purity Of Will
PW9200735	Hold The Force
PW9200736	No Gravity
PW9200737	Electric Lights
PW9200738	Dark And Light Make Sparks
PW9200739	Angels Making Waves
PW9200740	Universe Lore
PW9200741	Spirit Moon
PW9200742	Red Queen
PW9200743	Celestial Embrace
PW9200744	Aqua Goddess
PW9200745	Quenching Fire
PW9200746	Bits Of Mega Space
PW9200747	Surprise
PW9200748	Men With Large Hat Walking Through Infinity
PW9200749	Easter Basket

Talismanic Series



Talisman Series

#PW9200725

Belt Of Orion

Talismanic Series



Talisman Series

#PW9200726

Breaking Through Reality

Talismanic Series



Talisman Series

#PW9200724

Shambala

Talismanic Series



Talisman Series

#PW9200728

United

Talismanic Series



Talisman Series

#PW9200729

Coral Sea

Talismanic Series



Talisman Series

#PW920030

Passing So Fast

Talismanic Series

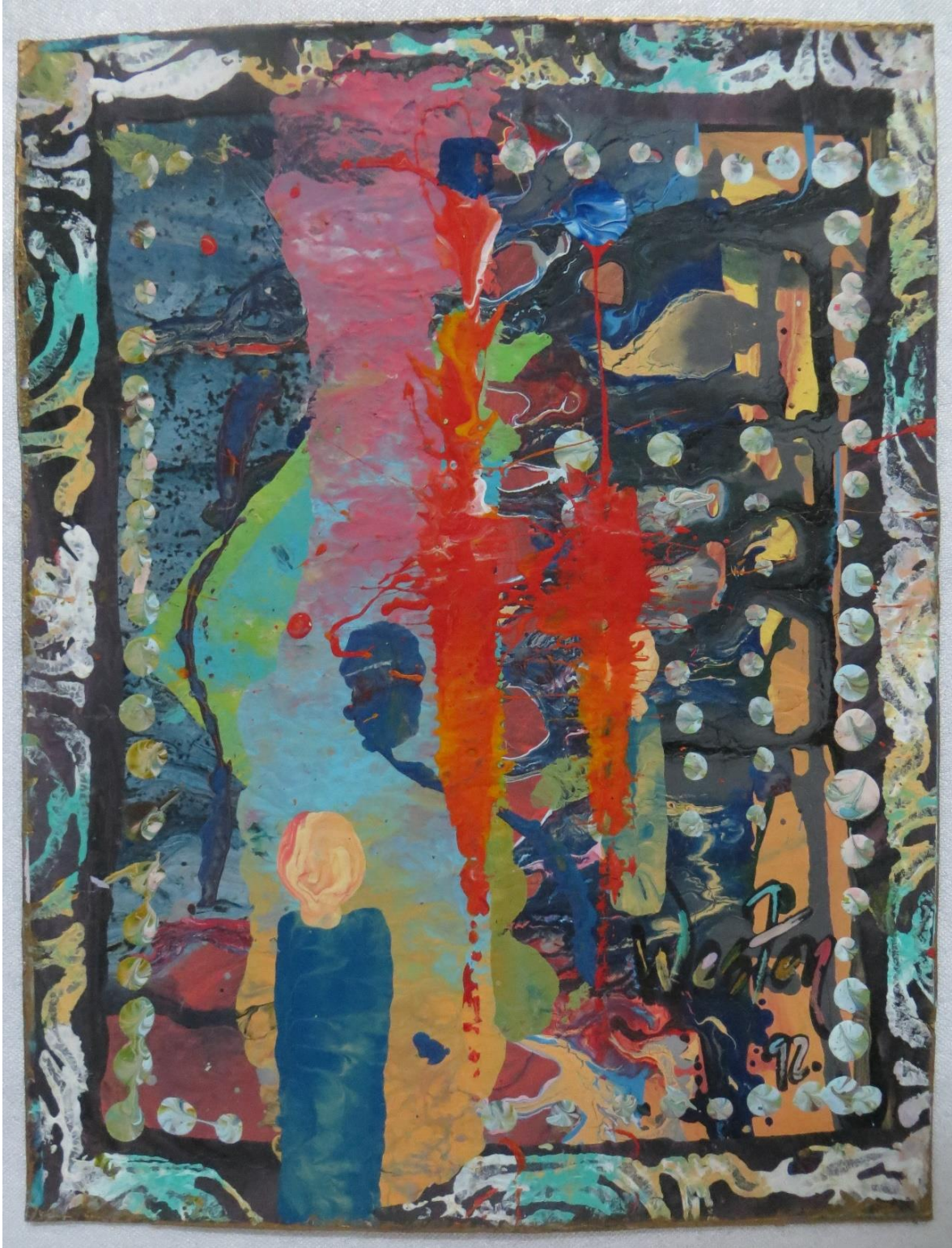


Talisman Series

#PW9200731

Exquisite Sea Shell

Talismanic Series



Talisman Series

#PW9200732

Nemesis

Talismanic Series



Talisman Series

#PW9200733

Magic Carpet Rides

Talismanic Series



Talisman Series

#PW9200734

Purity Of Will

Talismanic Series



Talisman Series

#PW9200735

Hold The Force

Talismanic Series



Talisman Series

#PW9200736

No Gravity

Talismanic Series



Talisman Series

#PW9200737

Electric Lights

Talismanic Series



Talisman Series

#PW9200738

Dark And Light Make Sparks

Talismanic Series



Talisman Series

#PW9200739

Angels Making Waves

Talismanic Series



Talisman Series

#PW9200740

Universe Lore

Talismanic Series



Talisman Series

#PW9200741

Spirit Moon

Talismanic Series



Talisman Series

#PW9200742

Red Queen

Talismanic Series



Talisman Series

#PW9200743

Celestial Embrace

Talismanic Series



Talisman Series

#PW9200744

Aqua Goddess

Talismanic Series

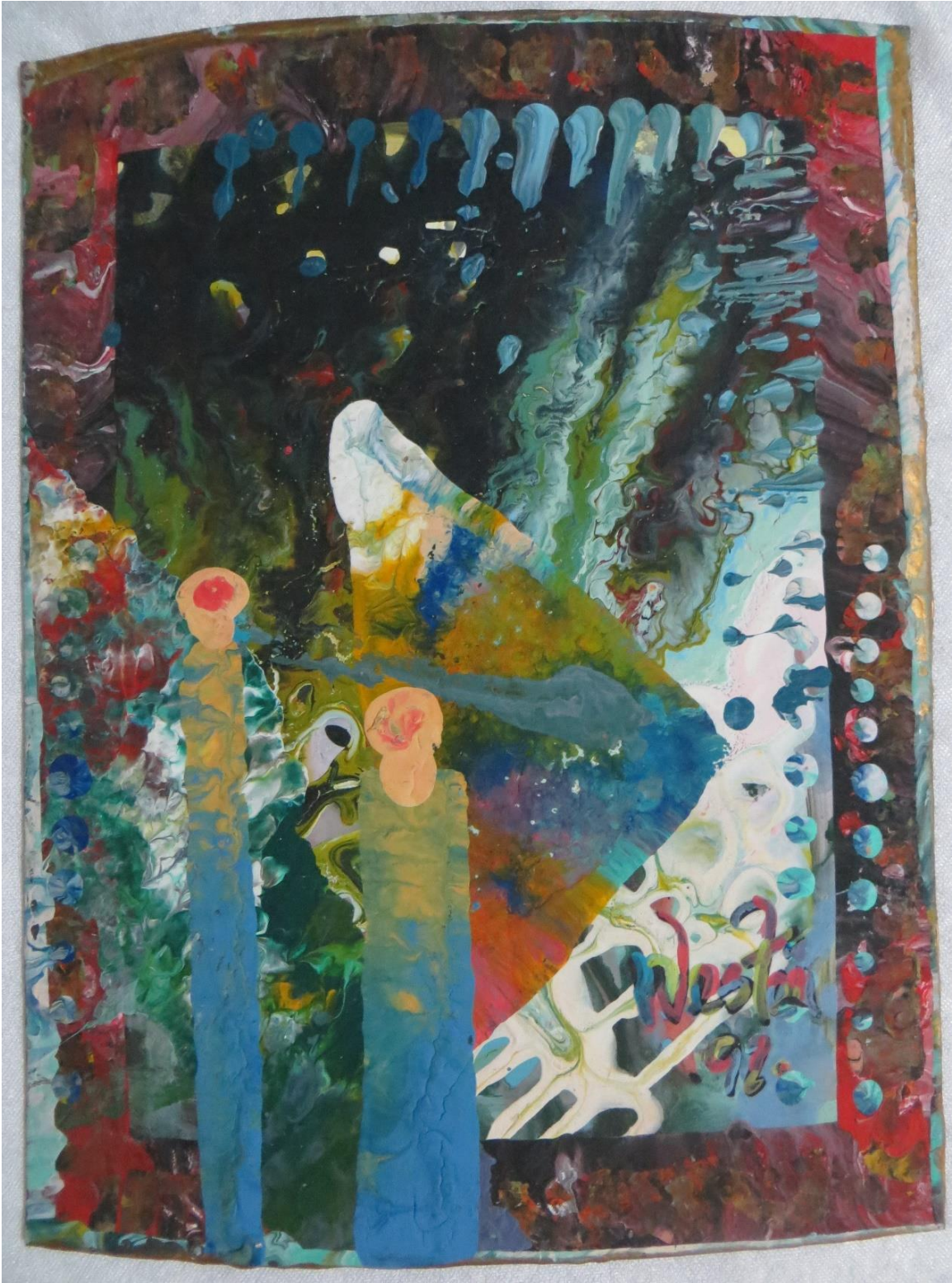


Talisman Series

PW9200745

Quenching Fire

Talismanic Series



Talisman Series

#PW9200746

Bits Of Mega Space

Talismanic Series



Talisman Series

#PW9200747

Surprise

Talismanic Series



Talisman Series #PW9200748 Men With Large Hat Walking Through Infinity

Talismanic Series

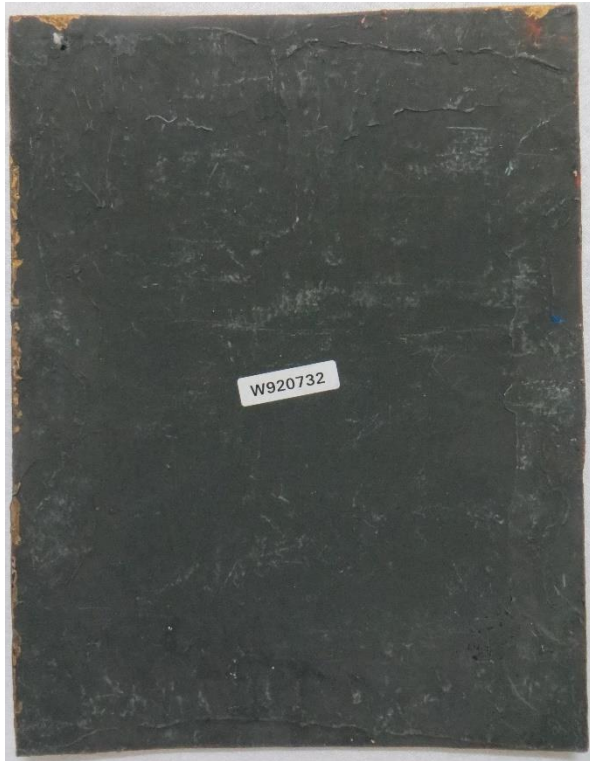


Talisman Series

#PW9200749

Easter Basket

Talismanic Series



Box: All Talisman Series Paintings are labeled with Serial numbers on Verso as shown.
Twenty-five Paintings total come in each handmade wooden box.
Shown is Box #20 and it is labeled with the range of Serial Numbers contained inside.



RICHARD C. FREY, ISA CAPP
 1275 EAST AVENUE, CHICO, CA 95926 PH (530) 343-4528
 CERTIFIED APPRAISER OF PERSONAL PROPERTY, ART AND ANTIQUES

PROFESSIONAL PROFILE

This is to offer our services drawing from 35 years of experience in all aspects of Professional Appraisal of Personal Property, Arbitration and Expert Witness testimony including Estate Evaluations, Donations, Divorce Settlements, Business Evaluations, and all Fine Art fields. Certified Appraiser of Personal Property and Lifetime Member of the International Society of Appraisers having completed professional courses in: Personal Property Appraising, Arbitration, Expert Witness Testimony, Business Practice, Methodology & Reasoning, Identification and Authentication, Research, Terminology, Fiduciary Responsibilities, Narrative Reports for the Internal Revenue Service and Other Litigation Forums, Appraisal Theory, and Business Communications, Trial Consultant and Non-adversarial Witness.

Formal education: University of Bedford, Bedford, England, B. S. Mining Engineering
 Landford University, London, England, M. S. Construction Management
 California State University at Chico, CA
 University of Nevada, Mackay School of Mines, Reno, NV
 Indiana University, Bloomington, IN
 University of California, Berkeley, CA
 Numerous National and International Appraisal conferences and workshops

Extensive study and travel in Japan, France, England, Turkey, Iran, India, Hong Kong, etc.

We utilize computer database worldwide sales records of over 880 major Auction Galleries. Direct working experience with most major Auction Houses.

Attorneys and entities for which we have completed appraisals:

Les Hait, Attorney 762 East Avenue Chico, CA 95926 (530) 895-3352	Dan Jeffers, CPA Stone, Jeffers and Assoc. 3120 Cohasset Rd. Ste. Suite 8 Chico, CA 95973 (530) 893-8761	David Rush, Attorney Peters Rush, Habib & McKenna 414 Salem Street Chico, CA 95926 (530) 342-3593	Erwin Williams, Attorney Bakke & Williams 445 Normal Avenue Chico, CA 95928 (530) 891-0247
Butte County District Attorney 25 County Center Drive Oroville, CA 95965 (530) 538-7411	Federal Deposit Insurance Corp. Ambica Chand PO Box 54958 Santa Clara, CA 95054 (530) 937-3343	State of California Victoria Dyson, Attorney McDonald, Saeltzer, Morris Creegan & Waddock 555 Capital Mall, Suite 700 Sacramento, CA 95814 (916) 444-5706	Pacific Gas & Electric Robert Malahowski PO Box 7442 San Francisco, CA 94120 (415) 973-6637
Wells Fargo Bank Trust Dept. William Staley PO Box 2511 Sacramento, CA 95812 (916) 440-4448	Museum of Ancient & Modern Art - Claude Needham PO Box 975 Penn Valley, CA 95946 (530) 432-3080	David A. McDowell, Law Corp. 3 Embarcadero Center, Suite 2280 San Francisco, CA 94111 (415) 438-3600	Farmers Insurance Group James Dyer, GCA FCLA PO Box 8190 CitrusHeights, CA 95621 (916) 727-4689

We are available on reasonably short notice to help determine values of all personal property, including all aspects of household, farm or business furnishings, shelf stock, guns, equipment, vehicles, boats, etc. Fine Arts: paintings, prints, drawings, sculpture, antiques, art glass, lamps, pottery, copper, silver, furniture, Oriental, rare books, stamps, coins, etc.

Please call to discuss your specific needs.

Thank you and sincerely,

Richard C. Frey, ISA CAPP

Richard C. Frey, ISA CAPP Life Member
 International Society of Appraisers